

Wencon Putty

The quick curing, epoxy moldable repair stick for multi purpose use.

- Cures in 15 minutes
- Simple apply procedure with cut and knead
- Fill out and seal cracks, leaks and holes
- Strong adhesion to all metal surfaces
- Fully machinable

General information

Wencon Putty is a quick curing, two component, epoxy compound supplied in a practical stick format, which is easy to use.

Wencon Putty shares many of the characteristics of metals, which together with a good adhesion to all metallic surfaces makes the repair compound highly suitable for repair of corroded and worn metals.

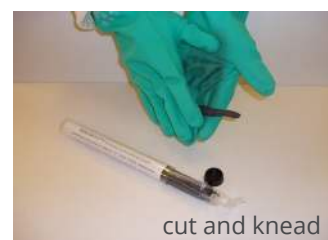
Wencon Putty is non-conductive and will therefore not cause bi-metallic corrosion. After curing the compound is resistant to oil, water, salt water and most diluted acids and a range of solvents. Heat resistance ranges from 60° C (140°F) in corrosive and heavy load environments and up to 250° (482°F) C when applied as a filling compound.

Application areas

This multi purpose epoxy paste is ideal for wide range of emergency repairs where an ultra quick curing and moldable compound is required. Typical applications are sealing, filling of cracks, leakages and holes in pipes, flanges, tanks etc.

Application

The base and activator is co-extruded into a 125g stick. Cut off the required amount of repair compound, knead it until an even colour is obtained and apply to the damaged area.



cut and knead



Product numbers:

| | |
|----------|---------------------------------------|
| No. 1040 | Wencon Putty, 8x125g (8x0,28 lb) unit |
| No. 1042 | Wencon Putty, 4x125g (4x0,28 lb) unit |

IMPA no.

| |
|--------|
| 812342 |
| 812329 |

ISSA no.

| |
|-----------|
| 75.553.40 |
| N/A |

GENERAL DESCRIPTION

Ultra quick curing two-component, mouldable epoxy repair stick.

SURFACE PREPARATION

The surface must always be clean, dry and grease free.

Improved adhesion can be obtained by grinding or Grit blasting of the surface, prior to application.

APPLYING

ALWAYS WEAR PROTECTIVE GLOVES.

Each stick contains both base and activator. Cut off the required amount and knead it until an even colour is obtained.

After kneading, place the Wencon Putty on the prepared surface and massage or press it into the surface using the fingers.

Heat cold items for better adhesion.

POT LIFE

Depending on amount mixed and temperature. Mixed in small amounts, the pot life is approximately 3-6 minutes at 20°C (68°F)

CURING TIME

Initial setting will take place in 15 minutes and the compound is ready for machining in just 30 minutes.

Wencon Putty obtains full mechanical strength after only 2 hours.

Curing time depends on the temperature and thickness applied. If faster curing is required, heat can be added.

MACHINABLE

After curing, the product can be machined, drilled and worked like metal.

TECHNICAL DATA

Hardness Shore D: 85 **(DIN 53505)**

Tensile strength: 4,6 N/mm² - 655 p.s.i. **(DIN 53454)**

Compressive strength:

Rcrack: 35,14 N/mm² - 5,000 p.s.i. **(DIN 53454)**

Shear adhesion: 4,5 N/mm² - **(ASTM D1002)**

Adhesion to steel: 4,5 N/mm² - **(ISO 4624)**

SPECIFIC VOLUME

500 cm³ per kilogramme (33,9 cu inch/kg)

TEMPERATURE RESISTANCE

Corrosion: 60°C (140° F)

Light load: 120°C (248°F)

As filler: 250°C (482°F)

CHEMICAL RESISTANCE

The compound is resistant to oil, water, salt water and most diluted acids and alkalis as well as a range of solvents.

SHELF LIFE

At 20°C (68°F) : 3 years

HANDLING PRECAUTIONS

Read the Wencon Instruction for Use and the Safety Data Sheet.